



ONE BAY
BURLINGAME, CA

www.onebayburlingame.com
www.woodstockdevelopment.com



Mike Moran / Executive Managing Director / T+ 1 650 401 2121 / mike.moran@cushwake.com

Gary Boitano / Director / T+ 1 650 401 2122 / gary.boitano@cushwake.com

Clarke Funkhouser / Executive Director / T+ 1 650 401 2124 / clarke.funkhouser@cushwake.com



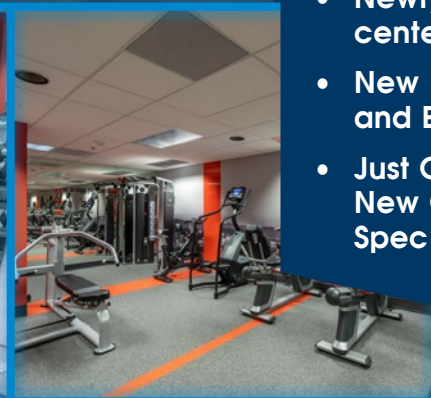
**WOODSTOCK
DEVELOPMENT**



ONE BAY

NEW MODERNIZED RENOVATION

- Updated Building Exterior, Landscaping, Path of Travel and Signage
- Newly completed fitness center
- New Modern Lobby and Elevators
- Just Completed - Must See New Ground Floor Modern Spec Suite



NEW SPEC SUITE

CLICK FOR MORE DETAILS





ONE BAY

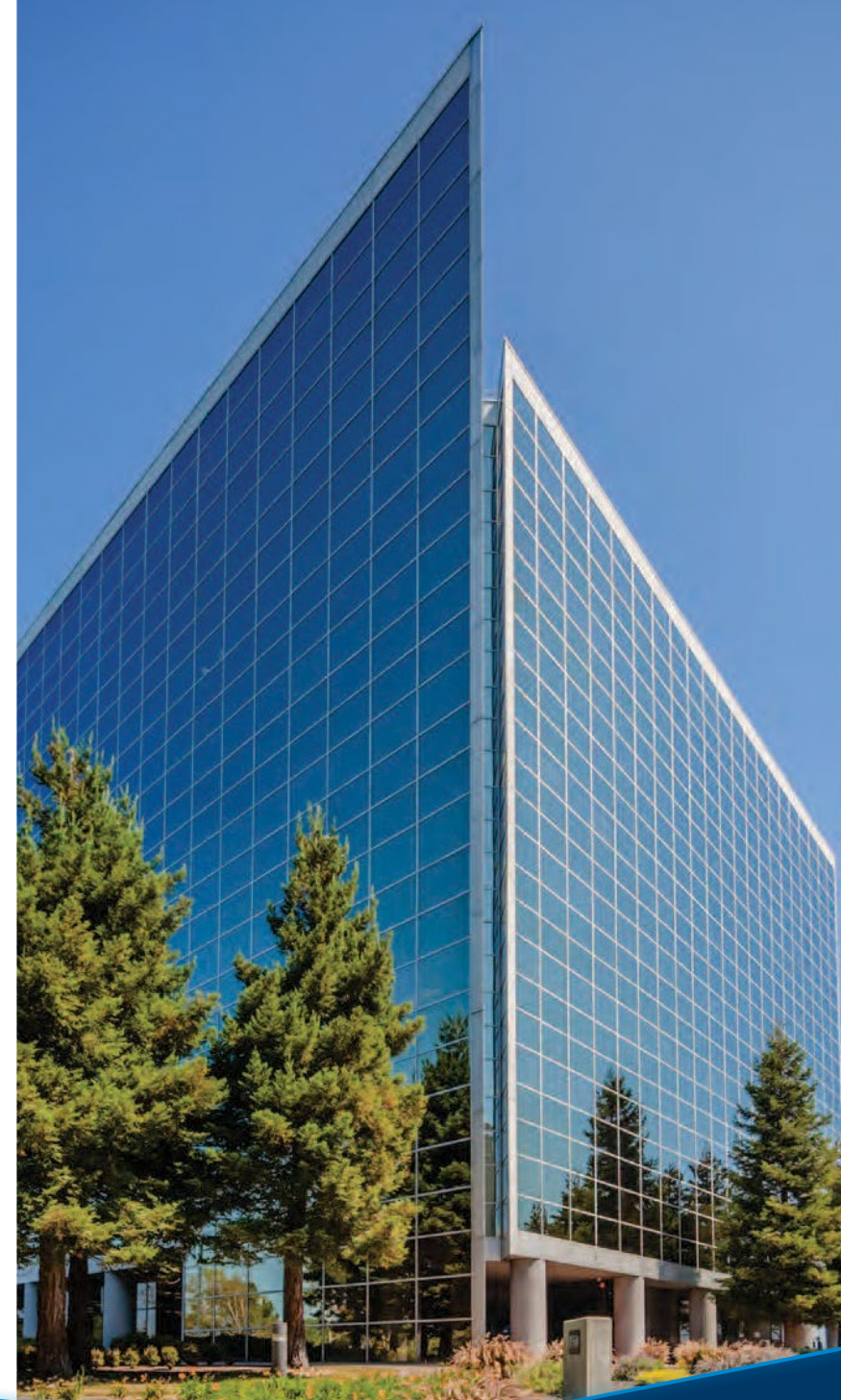
PROPERTY HIGHLIGHTS

- **Baytrail Access**
- **Airport Parking**
- **Bay Views**
- Recently renovated modern lobby, building exterior, signage, landscaping and elevators
- Newly completed fitness center
- Minutes to Millbrae Intermodal Station (BART/ Caltrain) and San Francisco International Airport
- Surrounded by Retail, Hotel, and Dining Amenities
- Just 2 miles from SFO Airport
- Café on-site
- Immediate Access to Highway 101
- Centrally Located to San Francisco, East Bay, Peninsula, and Silicon Valley
- Stunning views of the Peninsula, Bay, Mountains, and San Francisco skyline



ONE BAY AVAILABLE SUITES

SUITE #	SF	COMMENTS
Suite 799	±1,186 SF	1 Private Offices, Open Workplace (*Contiguous with Suite 780 for up to ±4,893 SF)
Suite 780	±3,707 SF	8 Private Offices, Conference Room, Kitchen, Open Workplace (*Contiguous with Suite 799 for up to ±4,893 SF)
Suite 690	±2,682 SF	NEW SPEC SUITE Break Room, Server/Storage Closet, Open Workplace, Bay Views
Suite 480	±2,439 SF	3 Private Offices, Kitchen, Open Workplace
Suite 355	±2,479 SF	2 Private Offices, Conference Room, Server/Storage Room, Open Workplace
Suite 218	±5,710 SF	11 Private Offices, 2 Conference Rooms, Storage Room, Kitchen, Open Workplace, Bay Views (*Contiguous with Suite 205 & 210 for up to ±9,333 SF)
Suite 210	±1,193 SF	1 Private Office, Conference Room, Storage Room, Open Workplace (*Contiguous with Suite 205 & 218 for up to ±9,333 SF)
Suite 205	±2,430 SF	3 Private Offices, Conference Room, Kitchen, Open Workplace, Bay Views (*Contiguous with Suite 210 & 218 for up to ±9,333 SF)
Suite 100	±6,492 SF	NEW SPEC SUITE - CLICK HERE FOR INTERACTIVE TOUR 4 Private Offices, 2 Conference Rooms, Modern Break Room, Server Room, Open Workplace, Exposed & High Ceilings, Floor to Ceiling Window Line, Bay Views
Suite 60	±2,746 SF	2 Private Offices, Conference Room, Kitchen, IT/Storage Room, Open Workplace SPECIAL PRICING: \$2.95 FS PSF
Suite 33	±5,837 SF	11 Private Offices, Conference Room, Kitchen, IT/Storage Room, Open Workplace SPECIAL PRICING: \$2.95 FS PSF



Mike Moran / Executive Managing Director / T+ 1 650 401 2121 / mike.moran@cushwake.com

Gary Boitano / Director / T+ 1 650 401 2122 / gary.boitano@cushwake.com

Clarke Funkhouser / Executive Director / T+ 1 650 401 2124 / clarke.funkhouser@cushwake.com





ONE BAY

AVAILABLE

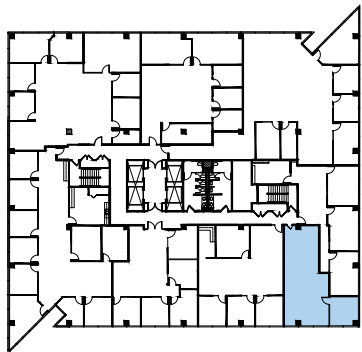
Suite 799 ±1,186 RSF*

- 1 Private Offices
- Open Workplace

*Contiguous with Suite 780 for up to ±4,893 RSF

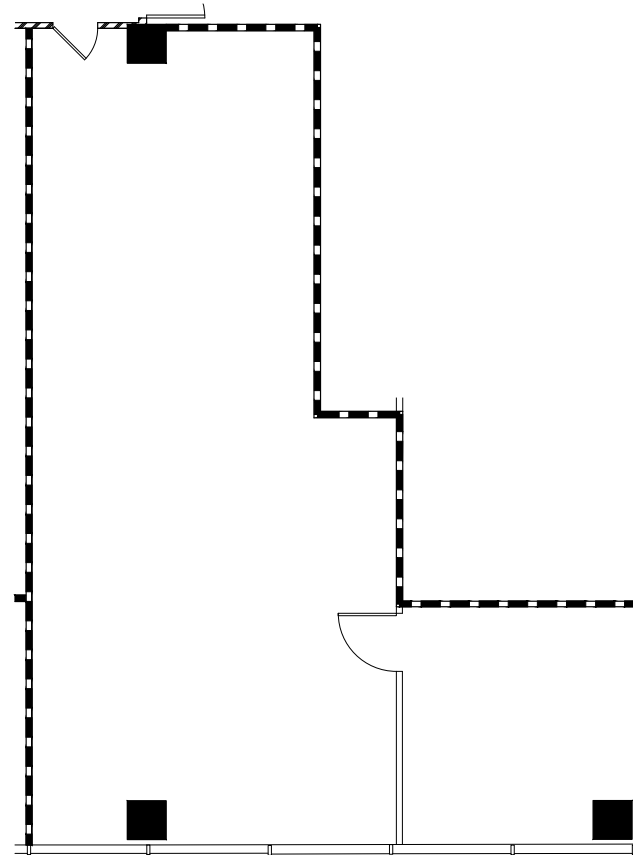
BAY VIEW

PARTIAL BAY VIEW



PARTIAL BAY VIEW

MONTARA MOUNTAIN VIEW



MONTARA MOUNTAIN VIEW

Mike Moran / Executive Managing Director / T+ 1 650 401 2121 / mike.moran@cushwake.com

Gary Boitano / Director / T+ 1 650 401 2122 / gary.boitano@cushwake.com

Clarke Funkhouser / Executive Director / T+ 1 650 401 2124 / clarke.funkhouser@cushwake.com





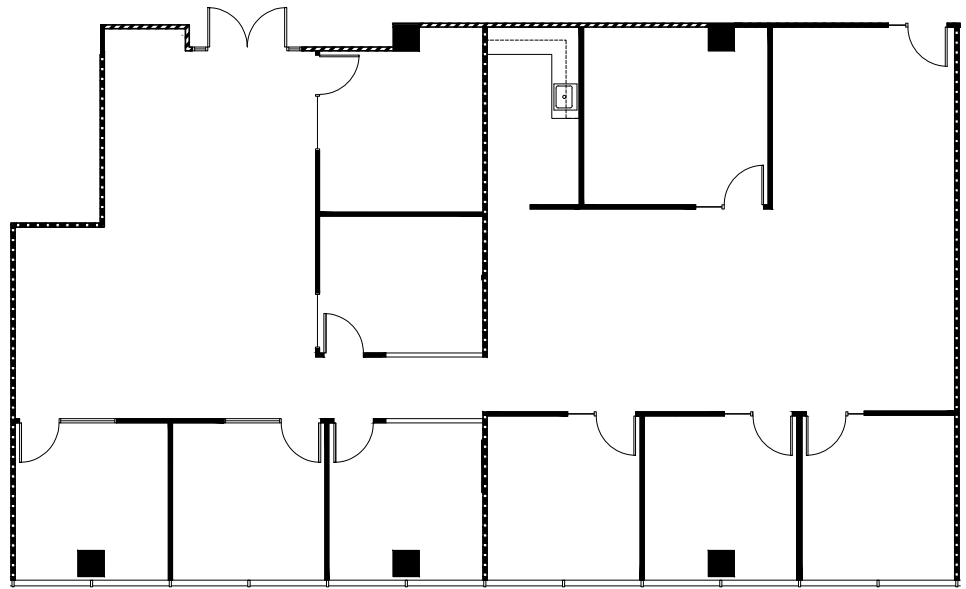
ONE BAY

AVAILABLE

Suite 780 ±3,707 RSF*

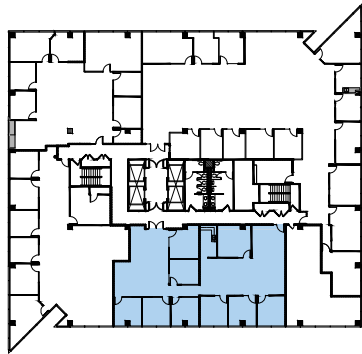
- 8 Private Offices
- Conference Room
- Kitchen
- Open Workplace

*Contiguous with Suite 799 for up to ±4,893 RSF



MONTARA MOUNTAIN VIEW

BAY VIEW



PARTIAL BAY VIEW

PARTIAL BAY VIEW

MONTARA MOUNTAIN VIEW

Mike Moran / Executive Managing Director / T+ 1 650 401 2121 / mike.moran@cushwake.com
 Gary Boitano / Director / T+ 1 650 401 2122 / gary.boitano@cushwake.com
 Clarke Funkhouser / Executive Director / T+ 1 650 401 2124 / clarke.funkhouser@cushwake.com





ONE BAY

NEW SPEC SUITE

Suite 690

±2,682 RSF

- Bay Views of Downtown San Francisco
- Break Room
- Server/Storage Closet
- Open Workplace
- Spec Suite Complete

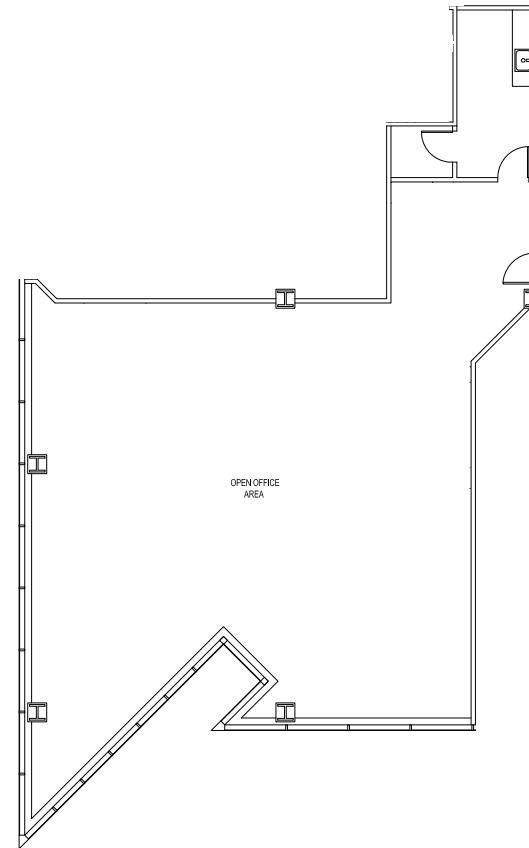
BAY VIEW



MONTARA MOUNTAIN VIEW

AVAILABLE

PARTIAL BAY VIEW



MONTARA MOUNTAIN VIEW

Mike Moran / Executive Managing Director / T+ 1 650 401 2121 / mike.moran@cushwake.com

Gary Boitano / Director / T+ 1 650 401 2122 / gary.boitano@cushwake.com

Clarke Funkhouser / Executive Director / T+ 1 650 401 2124 / clarke.funkhouser@cushwake.com





ONE BAY

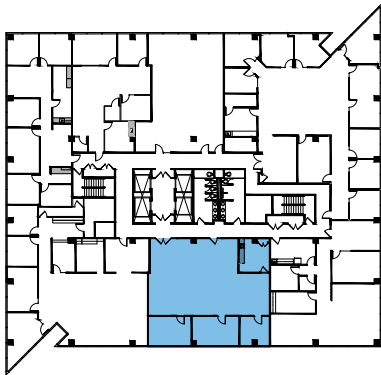
AVAILABLE

Suite 480 ±2,439 RSF

- 3 Private Offices
- Kitchen
- Open Workplace

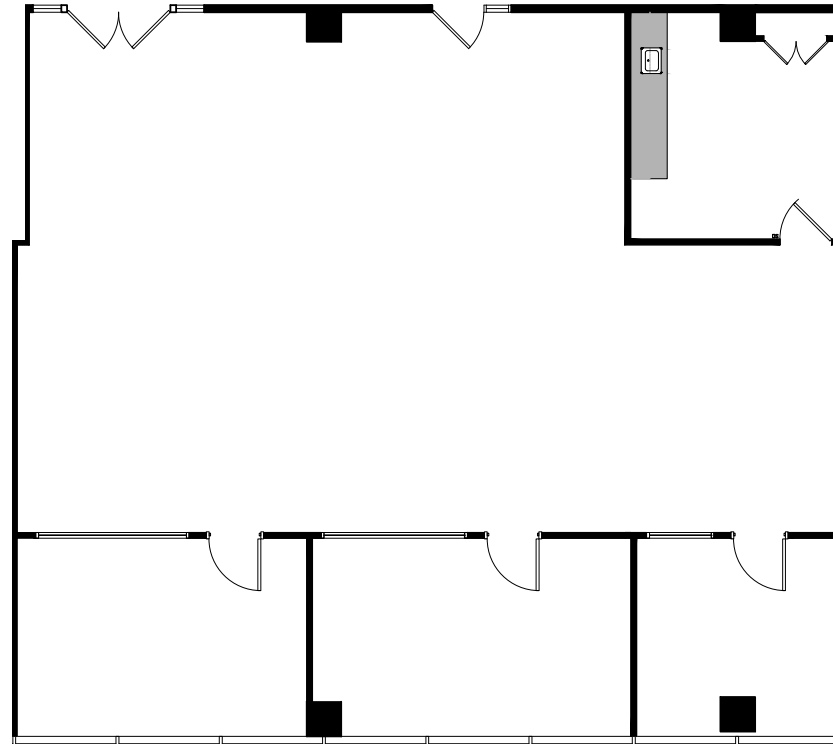
BAY VIEW

PARTIAL BAY VIEW



PARTIAL BAY VIEW

MONTARA MOUNTAIN VIEW



MONTARA MOUNTAIN VIEW

Mike Moran / Executive Managing Director / T+ 1 650 401 2121 / mike.moran@cushwake.com
 Gary Boitano / Director / T+ 1 650 401 2122 / gary.boitano@cushwake.com
 Clarke Funkhouser / Executive Director / T+ 1 650 401 2124 / clarke.funkhouser@cushwake.com



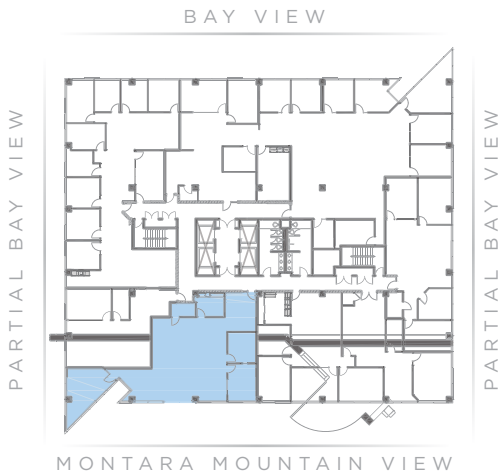


ONE BAY

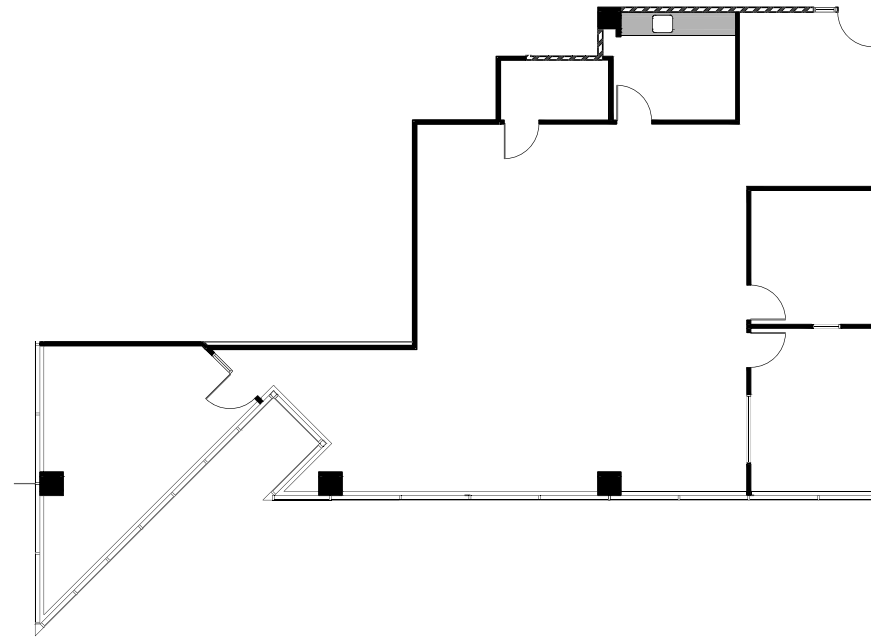
AVAILABLE

Suite 355 ±2,479 RSF

- Recently Renovated
- 2 Private Offices
- Conference Room
- Server/Storage Room
- Open Workplace



PARTIAL BAY VIEW



MONTARA MOUNTAIN VIEW

Mike Moran / Executive Managing Director / T+ 1 650 401 2121 / mike.moran@cushwake.com

Gary Boitano / Director / T+ 1 650 401 2122 / gary.boitano@cushwake.com

Clarke Funkhouser / Executive Director / T+ 1 650 401 2124 / clarke.funkhouser@cushwake.com





ONE BAY

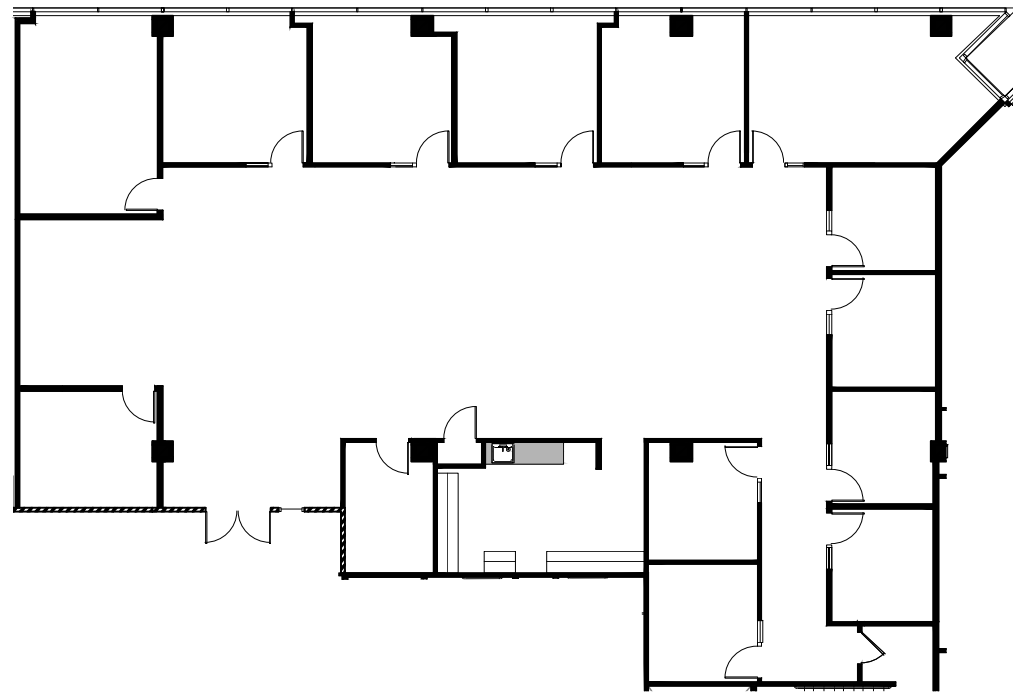
AVAILABLE

Suite 218 ±5,710 RSF*

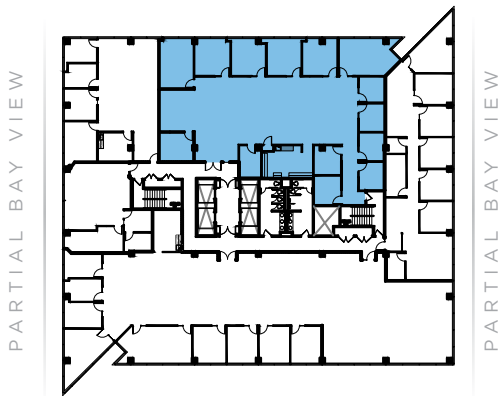
- 11 Private Offices
- 2 Conference Rooms
- Kitchen
- Storage Room
- Open Workplace
- Bay Views

*Contiguous with Suite 205 & 210 for up to ±9,333 SF

BAY VIEW



BAY VIEW



MONTARA MOUNTAIN VIEW

Mike Moran / Executive Managing Director / T+ 1 650 401 2121 / mike.moran@cushwake.com
 Gary Boitano / Director / T+ 1 650 401 2122 / gary.boitano@cushwake.com
 Clarke Funkhouser / Executive Director / T+ 1 650 401 2124 / clarke.funkhouser@cushwake.com





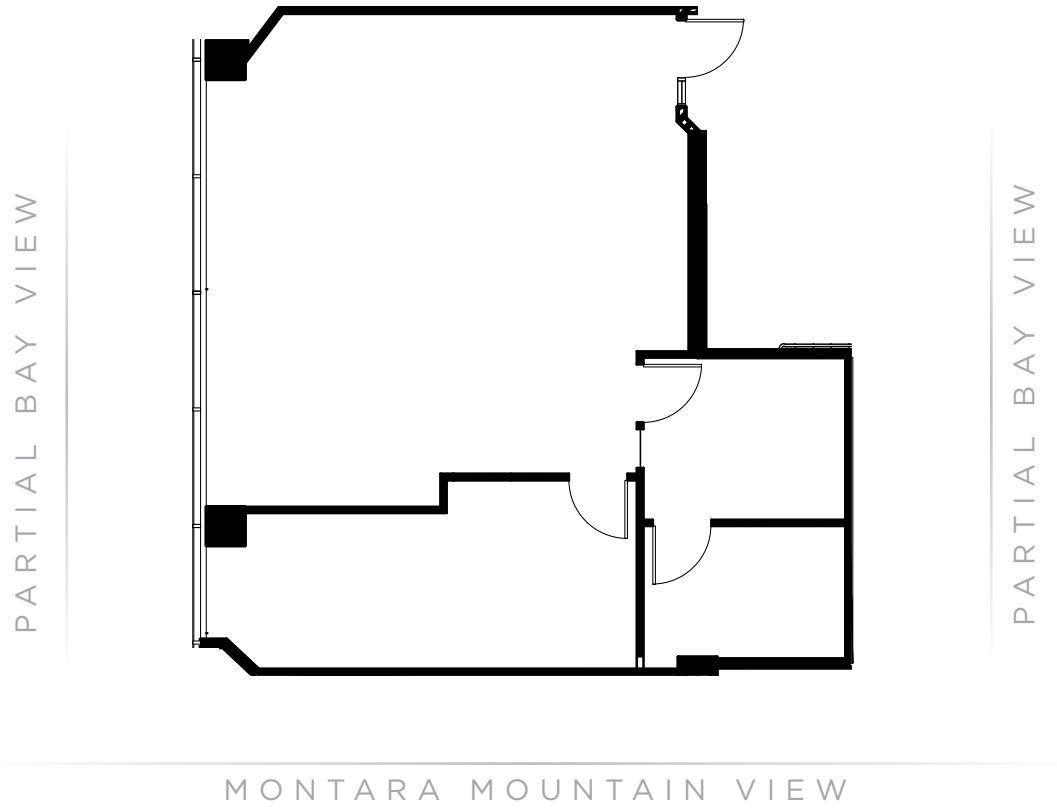
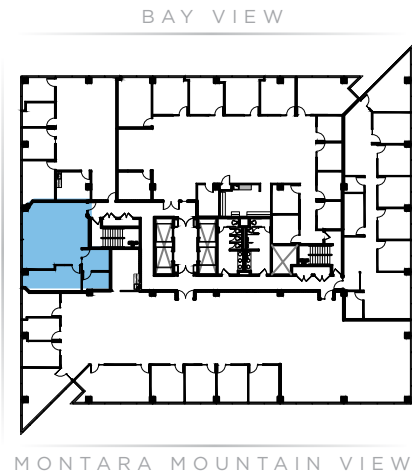
ONE BAY

AVAILABLE

Suite 210 ±1,193 RSF*

- 1 Private Office
- Conference Room
- Storage Room
- Open Workplace

*Contiguous with Suite 205 & 218 for up to ±9,333 SF



Mike Moran / Executive Managing Director / T+ 1 650 401 2121 / mike.moran@cushwake.com
 Gary Boitano / Director / T+ 1 650 401 2122 / gary.boitano@cushwake.com
 Clarke Funkhouser / Executive Director / T+ 1 650 401 2124 / clarke.funkhouser@cushwake.com





ONE BAY

AVAILABLE

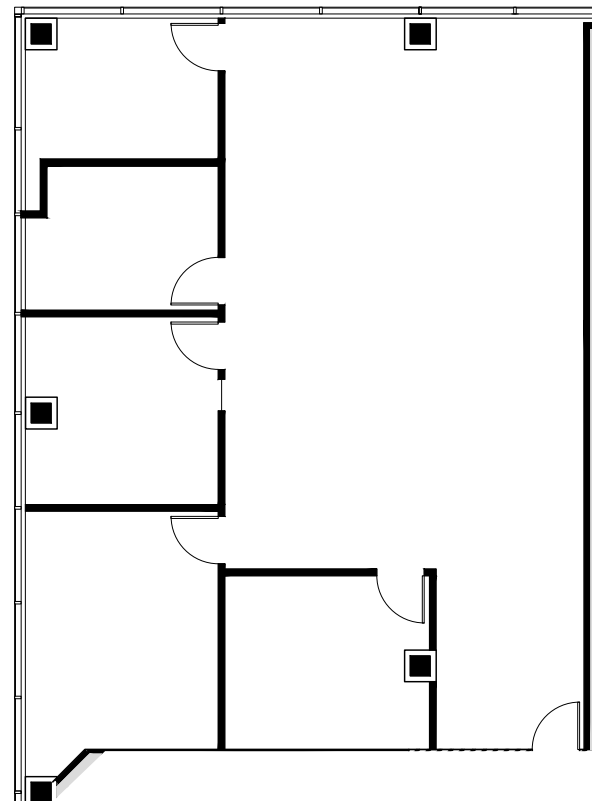
Suite 205 ±2,430 RSF*

- 3 Private Offices
- Conference Room
- Break Room
- Open Workplace
- Bay Views

*Contiguous with Suite 210 & 218 for up to ±9,333 SF

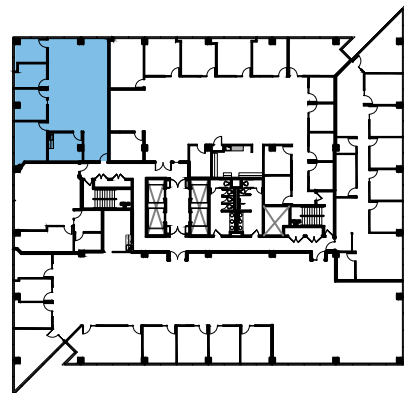
BAY VIEW

PARTIAL BAY VIEW



BAY VIEW

PARTIAL BAY VIEW



PARTIAL BAY VIEW

MONTARA MOUNTAIN VIEW

Mike Moran / Executive Managing Director / T+ 1 650 401 2121 / mike.moran@cushwake.com
 Gary Boitano / Director / T+ 1 650 401 2122 / gary.boitano@cushwake.com
 Clarke Funkhouser / Executive Director / T+ 1 650 401 2124 / clarke.funkhouser@cushwake.com





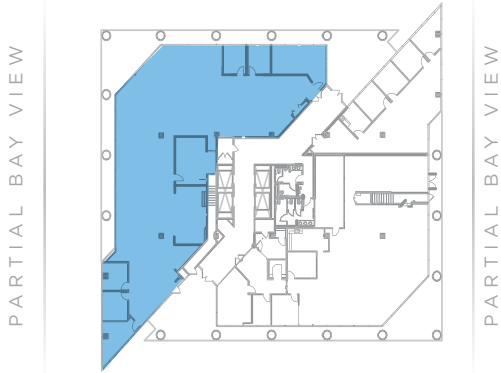
ONE BAY

NEW SPEC SUITE

Suite 100 ±6,492 RSF

- 4 Private Offices
- 2 Conference Rooms
- Modern Break Room
- Open Workplace
- Server Room
- Exposed & High Ceilings
- Floor to Ceiling Window Line
- Bay Views

BAY VIEW

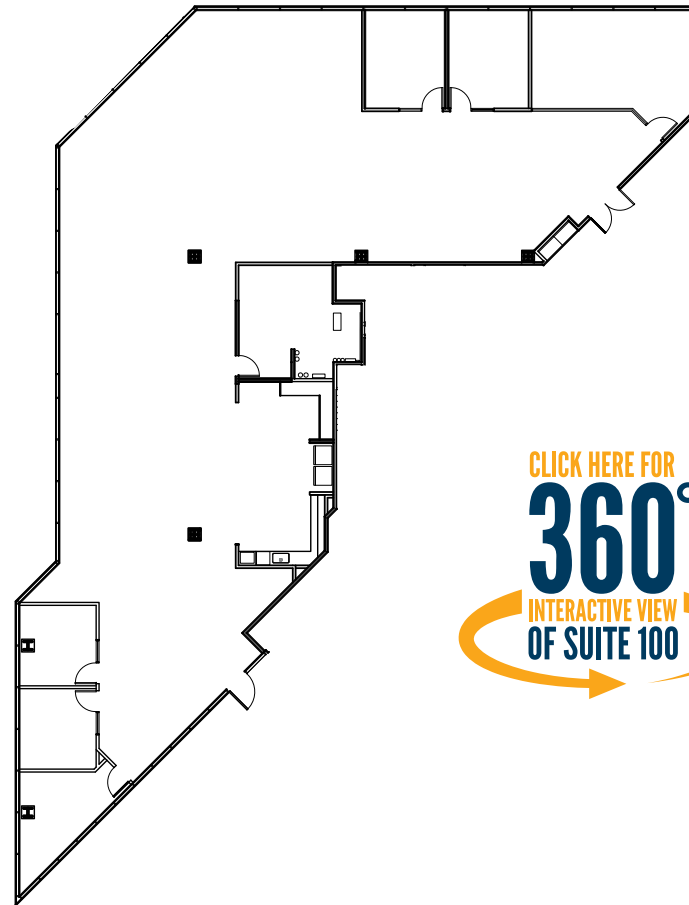


MONTARA MOUNTAIN VIEW

AVAILABLE

BAY VIEW

PARTIAL BAY VIEW



CLICK HERE FOR
360°
 INTERACTIVE VIEW
 OF SUITE 100

Mike Moran / Executive Managing Director / T+ 1 650 401 2121 / mike.moran@cushwake.com

Gary Boitano / Director / T+ 1 650 401 2122 / gary.boitano@cushwake.com

Clarke Funkhouser / Executive Director / T+ 1 650 401 2124 / clarke.funkhouser@cushwake.com





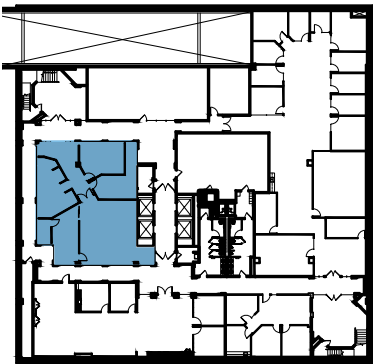
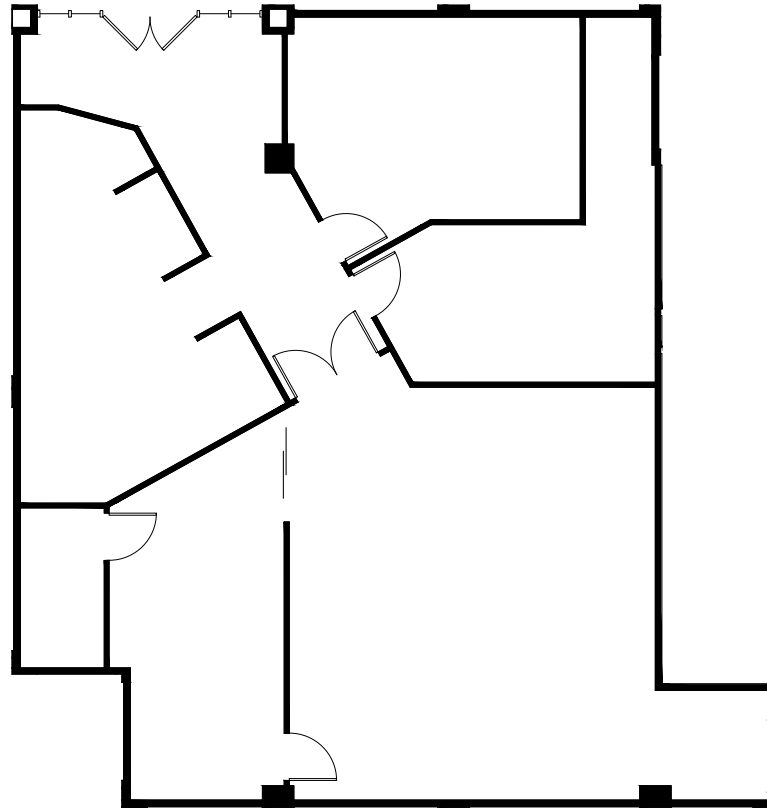
ONE BAY

AVAILABLE

Suite 60

±2,746 RSF

- 2 Private Offices
- Conference Room
- Kitchen
- IT/Storage Room
- Open Workplace
- Available 6/2018
- **Special Pricing Suite 33: \$2.95 FS PSF**



Mike Moran / Executive Managing Director / T+ 1 650 401 2121 / mike.moran@cushwake.com

Gary Boitano / Director / T+ 1 650 401 2122 / gary.boitano@cushwake.com

Clarke Funkhouser / Executive Director / T+ 1 650 401 2124 / clarke.funkhouser@cushwake.com





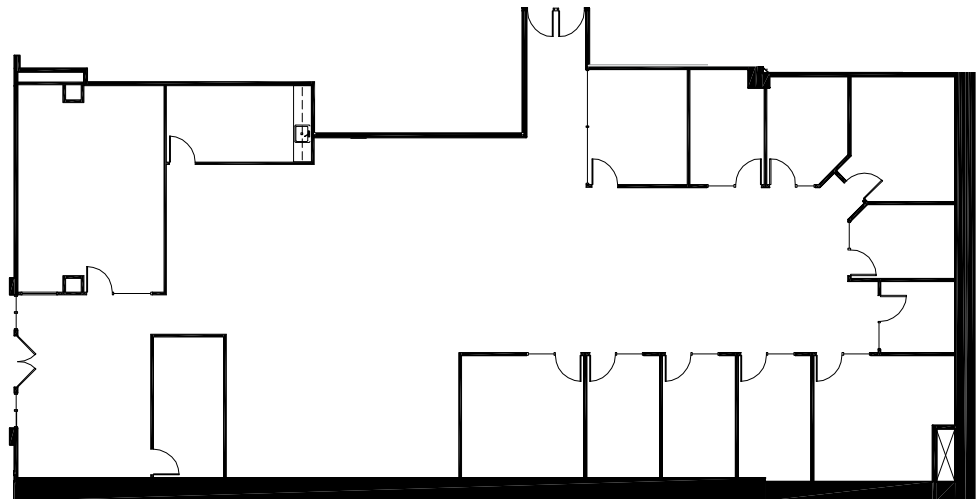
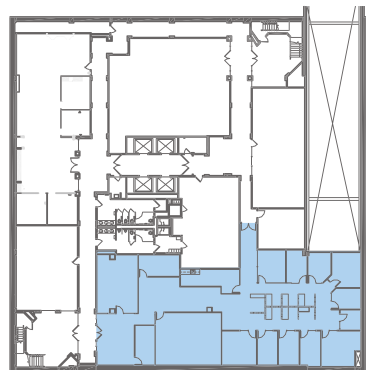
ONE BAY

AVAILABLE

Suite 33

±5,837 RSF

- 11 Private Offices
- Conference Room
- Kitchen
- IT/Storage Room
- Open Workplace
- **Special Pricing Suite 33: \$2.95 FS PSF**



Mike Moran / Executive Managing Director / T+ 1 650 401 2121 / mike.moran@cushwake.com

Gary Boitano / Director / T+ 1 650 401 2122 / gary.boitano@cushwake.com

Clarke Funkhouser / Executive Director / T+ 1 650 401 2124 / clarke.funkhouser@cushwake.com



TRANSPORTATION



LEGEND

BIKE/BAY TRAIL

MILLBRAE BIKE ROUTE
12 MIN / 1.8 MILES

BROADWAY BIKE ROUTE
6 MIN / 0.8 MILES



SHUTTLE & CALTRAIN SCHEDULE

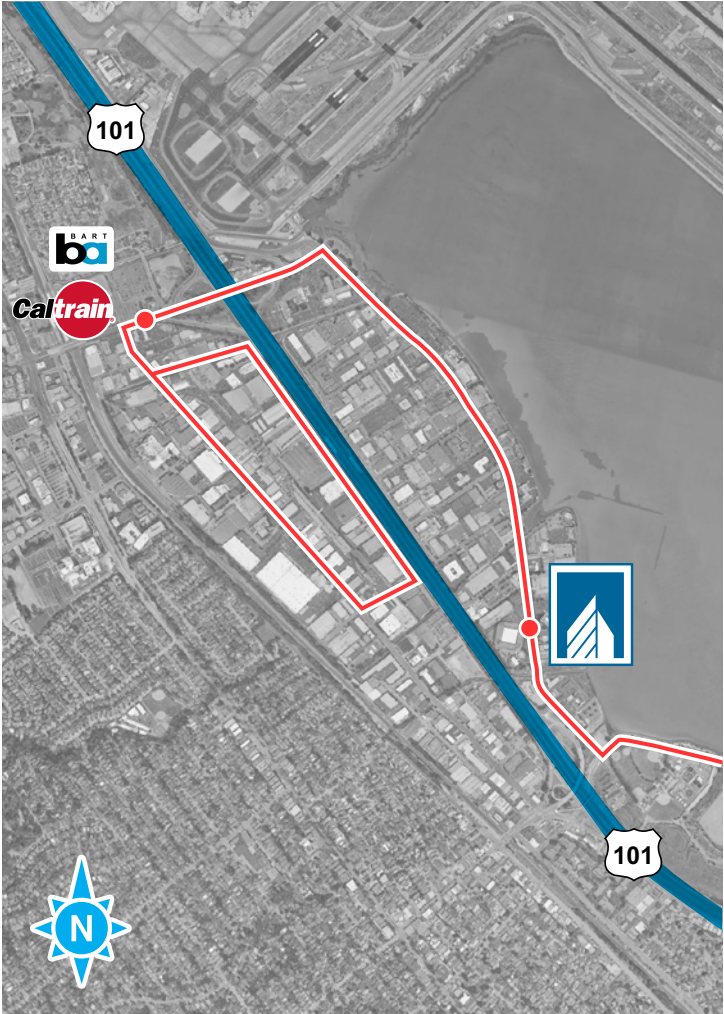
CALTRAIN/BART SHUTTLE A.M.

Millbrae Station Pick-Up	One Bay Plaza Drop-Off
7:00 AM	7:14 AM
7:33 AM	7:47 AM
7:47 AM	8:01 AM
8:12 AM	8:26 AM
8:27 AM	8:41 AM
8:46 AM	9:00 AM
9:01 AM	9:15 AM
9:20 AM	9:34 AM

CALTRAIN/BART SHUTTLE P.M.

One Bay Plaza Pick-Up	Millbrae Station Drop-Off
4:00 PM	4:07 PM
4:20 PM	4:27 PM
4:40 PM	4:47 PM
5:00 PM	5:07 PM
5:20 PM	5:27 PM
5:40 PM	5:47 PM
6:00 PM	6:07 PM
6:20 PM	6:27 PM
6:40 PM	6:47 PM

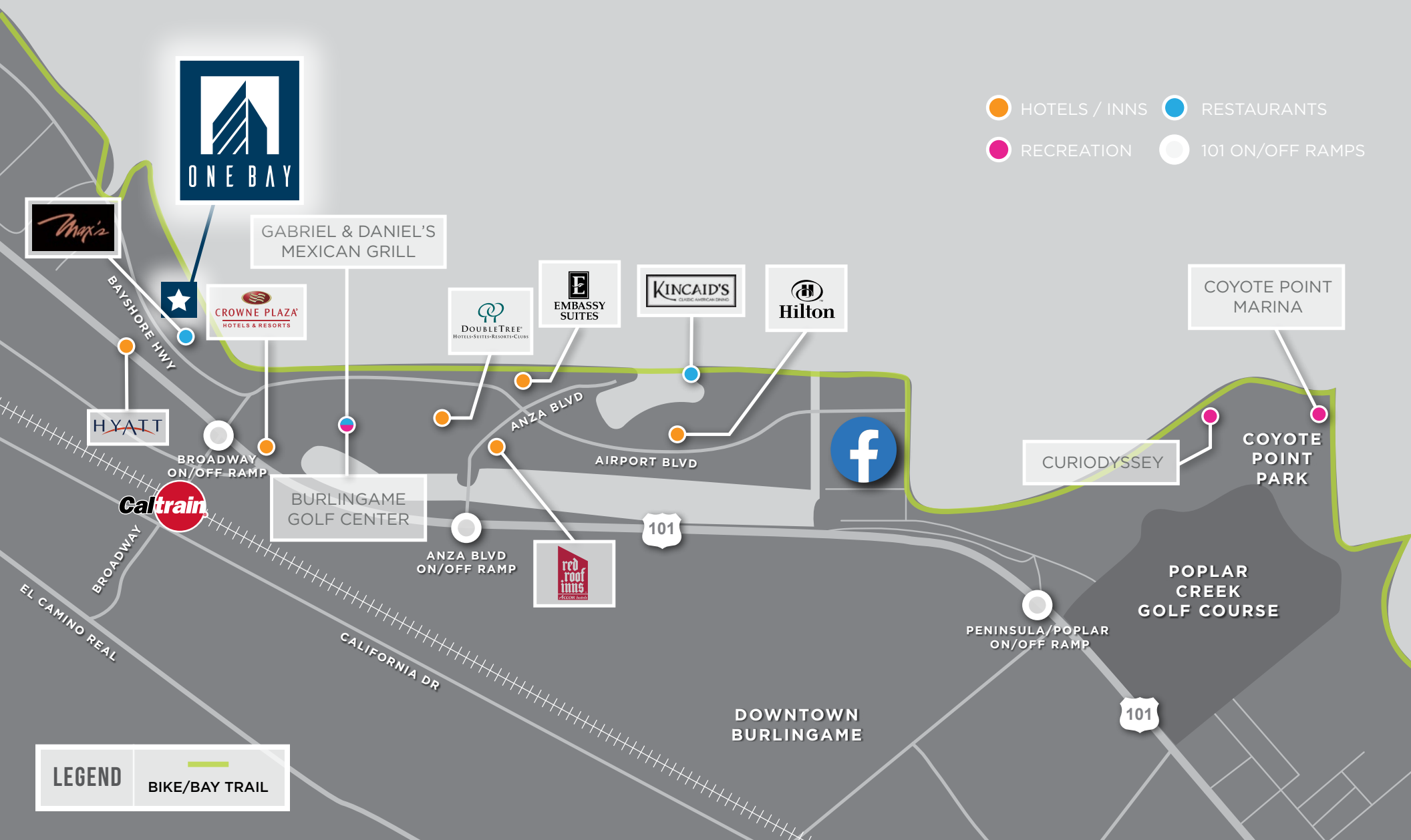
SHUTTLE ROUTE



CALTRAIN ROUTE



CLOSE PROXIMITY AMENITIES



- HOTELS / INNS
- RESTAURANTS
- RECREATION
- 101 ON/OFF RAMPS

LEGEND

BIKE/BAY TRAIL

BURLINGAME DOWNTOWNS

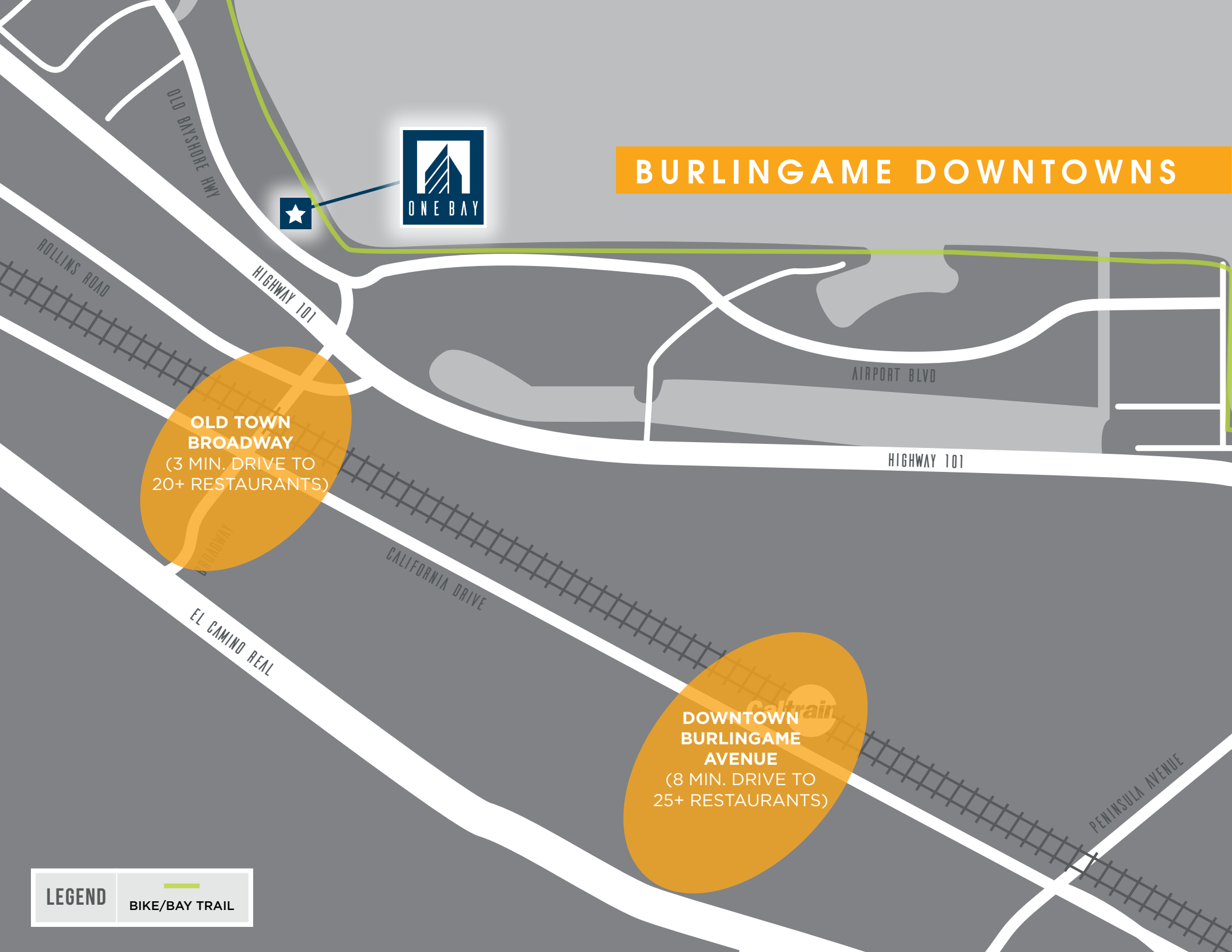


OLD TOWN BROADWAY
(3 MIN. DRIVE TO 20+ RESTAURANTS)

DOWNTOWN BURLINGAME AVENUE
(8 MIN. DRIVE TO 25+ RESTAURANTS)

LEGEND

 BIKE/BAY TRAIL





RESTAURANTS

1 Stacks	10 Urban Bistro	19 Philz Coffee
2 Steelhead Brewery	11 Trapeze Tapas Bar	20 Sixtos
3 Barrelhouse	12 Crepevine	21 Pizzeria Delfina
4 Straits	13 The Cakery	22 Sapore Italiano
5 Blueline Pizza	14 Coconut Bay	23 Pizza My Heart
6 Starbucks Coffee	15 Pete's Coffee	24 Yogurtland
7 Il Forno	16 The Plant	25 Five Guys
8 Copenhagen Bakery	17 The Melt	26 Ikes Love Sandwiches
9 La Corneta	18 Stella Alpina	

RETAIL/GROCERY

1 Sur La Table	10 Apple Store
2 Lucy	11 Sephora
3 Banana Republic	12 Petfood Express
4 Pottery Barn	13 Ace Hardware
5 J Crew	14 Anthropologie
6 The Gap	15 AT&T
7 Bevmo!	16 Safeway
8 Mollie Stones	
9 Walgreens	

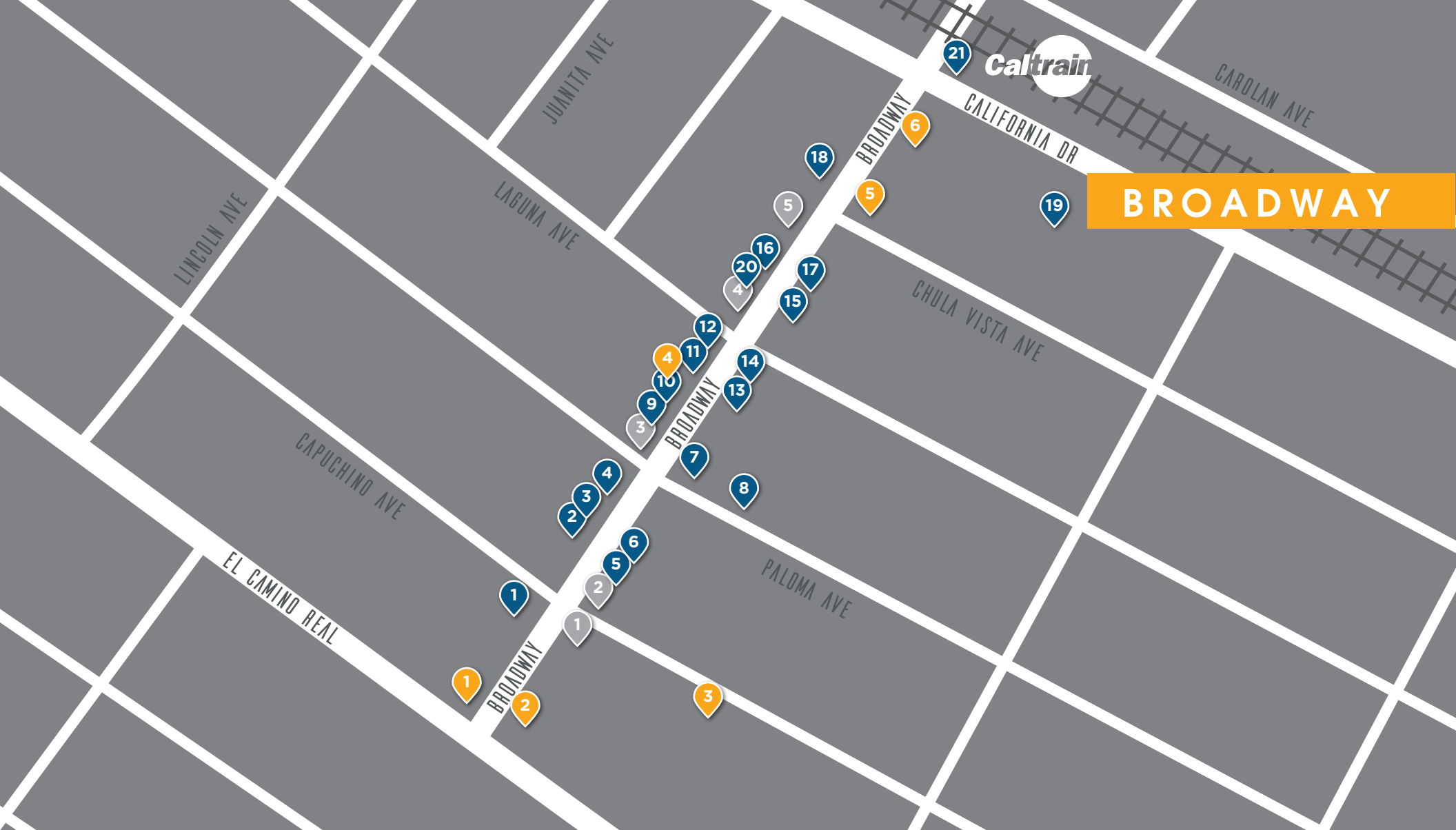
SERVICES

1 Bank of America
2 Bank of the West
3 Chase
4 Citibank
5 City Hall
6 Library
7 Wells Fargo
8 City National Bank
9 Comerica Bank



FIVE GUYS
FAMOUS
BURGERS and FRIES





RESTAURANTS

- | | | |
|-------------------------|------------------------------|------------------------|
| 1 Broadway Grill | 10 Starbucks | 19 Mokutanya |
| 2 Broadway Prime | 11 Juban Yakini House | 20 Preston's Ice Cream |
| 3 Cafe Figaro | 12 Young Can Wok | 21 Maverick Jack's |
| 4 Subway | 13 Ristorante Rocca | |
| 5 Sesame Korean Cuisine | 14 Village Host Pizza | |
| 6 Behan's Irish Pub | 15 Taste in Mediterranean | |
| 7 Big Joe's Cafe | 16 Bonne Sante | |
| 8 Shabu House | 17 Royal Donut Cafe | |
| 9 Mivan Mediterranean | 18 Shaara Mediterranean Cafe | |

RETAIL/GROCERY

- 1 Footwear Etc
- 2 Earthbeam Foods
- 3 Burlingame Farmers Market
- 4 Weimax Wines & Spirits
- 5 Walgreens

SERVICES

- 1 76 Gas Station
- 2 Chase Bank
- 3 US Post Office
- 4 Supercuts
- 5 Wells Fargo Bank
- 6 Chevron



ONE BAY

