

**NEWLY RENOVATED LOBBY
AND COMMON AREAS!**

FOR LEASE

1900 O'Farrell St

San Mateo, CA

[HOME](#)

[AVAILABLE](#)

[FLOOR PLANS](#)

[AMENITIES](#)

[TRANSPORTATION](#)

For more information, please contact:

Clarke Funkhouser

Executive Director
+1 650 401 2124
clarke.funkhouser@cushwake.com
LIC #01252763

Robert Russell

Woodstock Development
+1 650 579 1901
russell@woodstockdevelopment.com
LIC #01895777



cushmanwakefield.com

Cushman & Wakefield Copyright 2018. No warranty or representation, express or implied, is made to the accuracy or completeness of the information contained herein, and same is submitted subject to errors, omissions, change of price, rental or other conditions, withdrawal without notice, and to any special listing conditions imposed by the property owner(s). As applicable, we make no representation as to the condition of the property (or properties) in question.

[HOME](#)[AVAILABLE](#)[FLOOR PLANS](#)[AMENITIES](#)[TRANSPORTATION](#)

Property Highlights

- Easy freeway access
- Covered parking
- Workout room / showers
- Outdoor patio area
- Building security system in place
- Comcast Business Class installed
- Easy access to Caltrain via shuttle
- Available now
- Bay Bikes available at City Hall



For more information, please contact:

Clarke Funkhouser

Executive Director
+1 650 401 2124
clarke.funkhouser@cushwake.com
LIC #01252763

Robert Russell

Woodstock Development
+1 650 579 1901
russell@woodstockdevelopment.com
LIC #01895777

Space Available

Click Suite to View Floorplan

Suite Number	Square Footage
Suite 100	±8,578 SF <i>*Divisible to ±1,600 SF</i>
Suite 140	±3,024 SF
Suite 150	±2,755 SF



For more information, please contact:

Clarke Funkhouser

Executive Director
+1 650 401 2124
clarke.funkhouser@cushwake.com
LIC #01252763

Robert Russell

Woodstock Development
+1 650 579 1901
russell@woodstockdevelopment.com
LIC #01895777

Suite 100 / ±8,578 Square Feet

*Divisible to ±1,600 SF

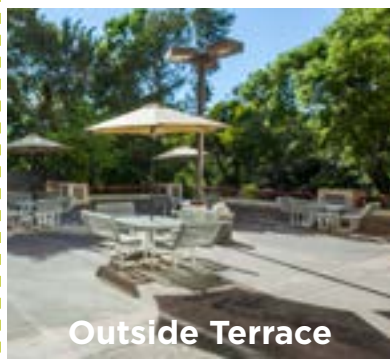


For more information, please contact:

Clarke Funkhouser
Executive Director
+1 650 401 2124
clarke.funkhouser@cushwake.com
LIC #01252763

Robert Russell
Woodstock Development
+1 650 579 1901
russell@woodstockdevelopment.com
LIC #01895777

Suite 140 / ±3,024 Square Feet



For more information, please contact:

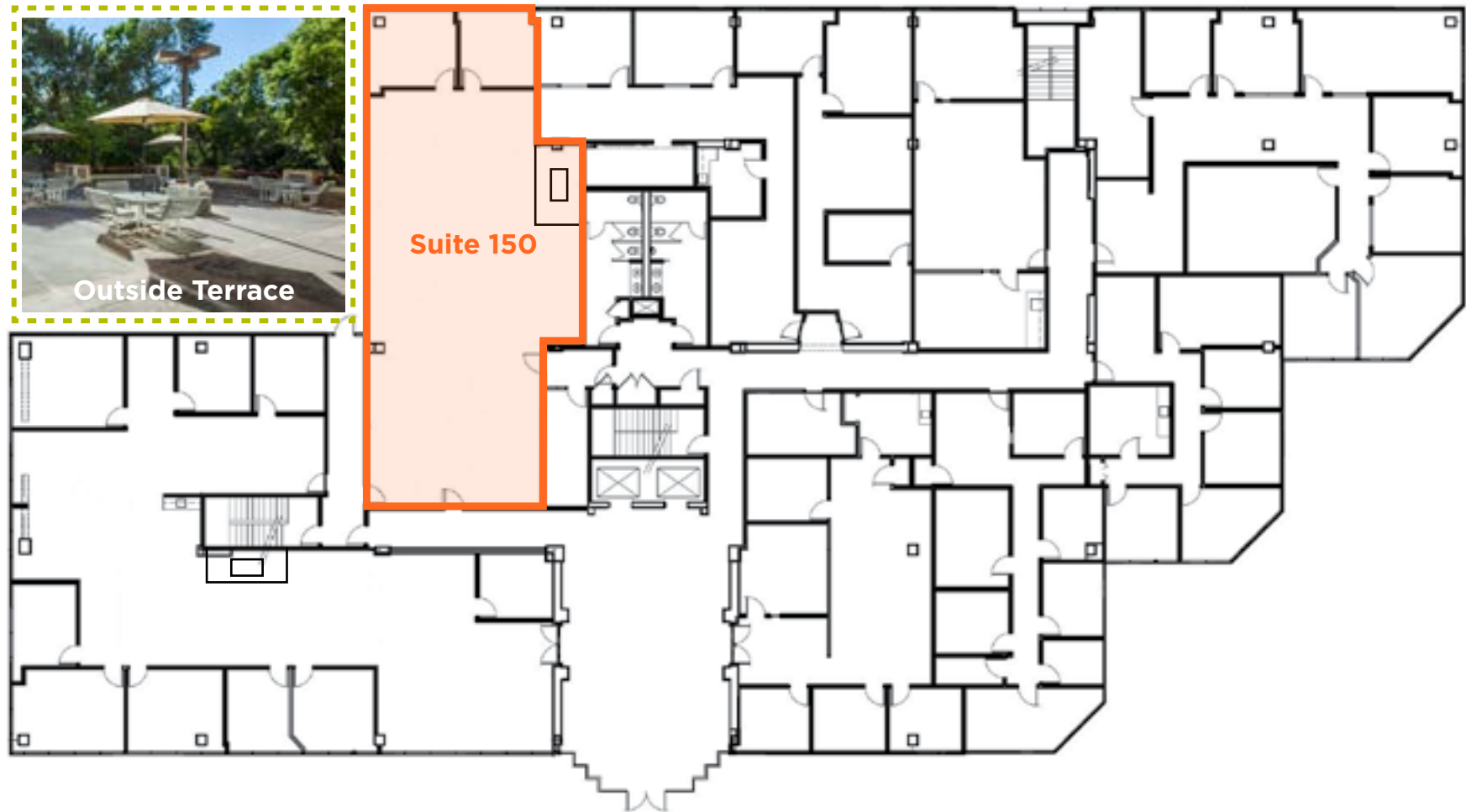
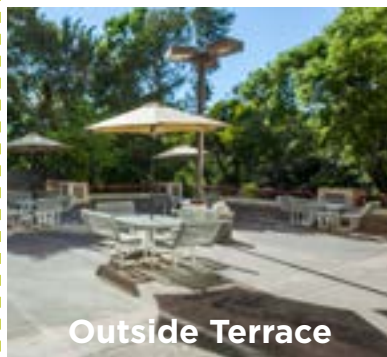
Clarke Funkhouser

Executive Director
+1 650 401 2124
clarke.funkhouser@cushwake.com
LIC #01252763

Robert Russell

Woodstock Development
+1 650 579 1901
russell@woodstockdevelopment.com
LIC #01895777

Suite 150 / ±2,755 Square Feet



For more information, please contact:

Clarke Funkhouser

Executive Director
+1 650 401 2124
clarke.funkhouser@cushwake.com
LIC #01252763

Robert Russell

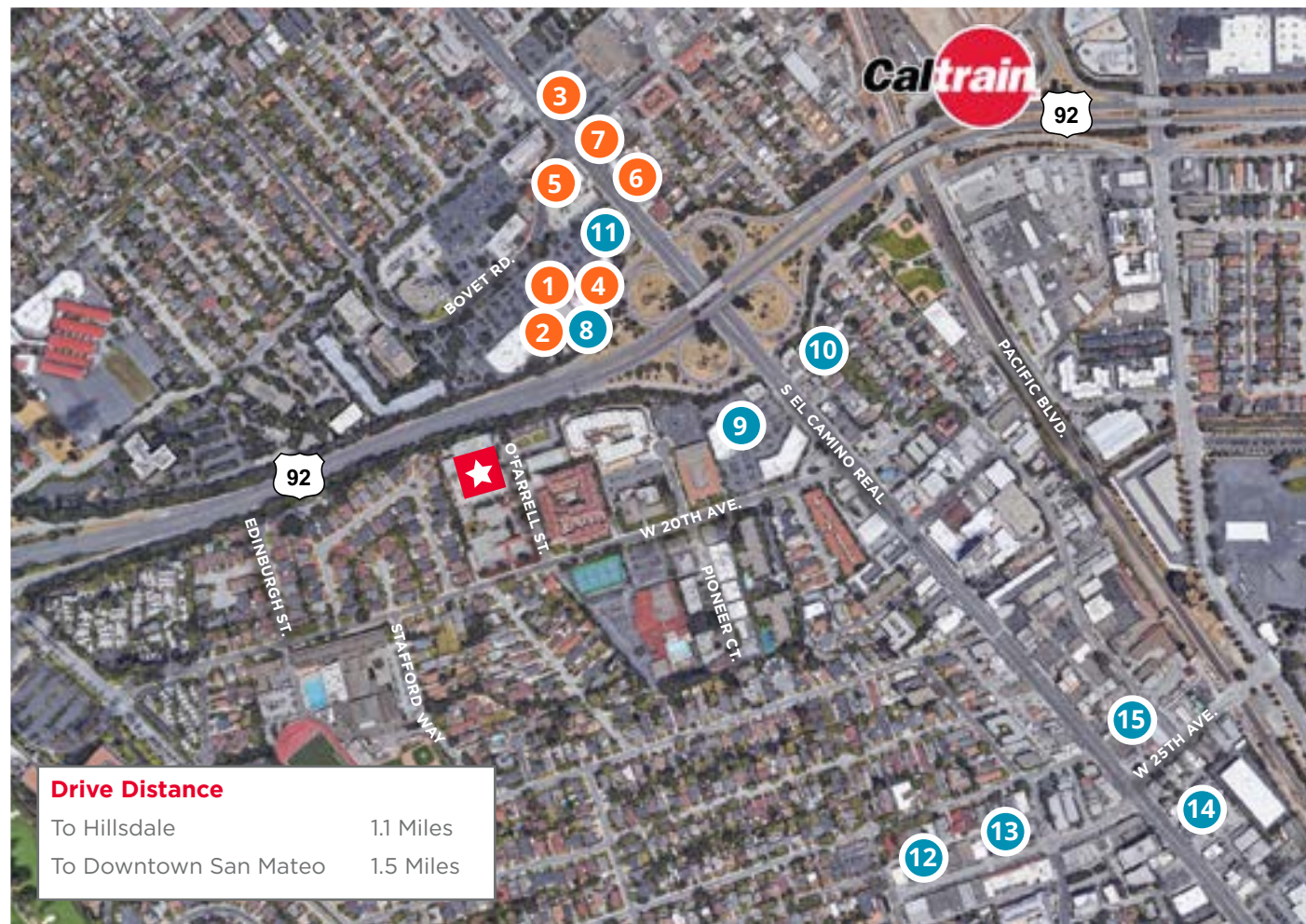
Woodstock Development
+1 650 579 1901
russell@woodstockdevelopment.com
LIC #01895777

Amenities

1. The UPS Store
2. CVS Pharmacy
3. Safeway
4. US First Credit Union
5. Chase
6. Wells Fargo
7. Starbucks

Restaurants:

8. Esposito's Borel Delicatessen
9. Santa Ramen
10. Heidi's Pies Restaurant
11. Windy Chicago Style Pizza
12. La Lanterna Resitorante
13. Tannourine Restaurant
14. Oceanic Restaurant
15. Little Shanghai



For more information, please contact:

Clarke Funkhouser

Executive Director
+1 650 401 2124
clarke.funkhouser@cushwake.com
LIC #01252763

Robert Russell

Woodstock Development
+1 650 579 1901
russell@woodstockdevelopment.com
LIC #01895777

Transportation



SHUTTLE SCHEDULE- CALTRAIN CONNECTOR—HILLSDALE

Caltrain Arrives Hillsdale Station		Shuttle Service			Caltrain Departs Hillsdale Station	
Northbound	Southbound	Departs Caltrain	Pick Up at City Hall			
6:51 am	6:40 am	6:56 am	7:01am			
7:28 am	7:40 am	7:45 am	7:50 am			
8:02 am	8:01 am	8:12 am	8:17am			
8:51 am	8:46 am	8:56 am	9:01 am	Arrives at Caltrain	Northbound	Southbound
			3:27 pm	3:38 pm	3:56 pm	3:44 pm
			4:25 pm	4:37 pm	4:42 pm	4:47 pm
			5:00 pm	5:12 pm	5:17 pm	5:22 pm
			5:48 pm	6:00 pm	6:08 pm	6:11 pm
			6:21 pm	6:33 pm	6:42 pm	6:38 pm

For more information regarding the shuttle service and schedule, please visit www.commute.org. For information on Bike Share go to www.baybikeshare.com.



*1900 O'Farrell is the second stop on the CalTrain Shuttle line

For more information, please contact:

Clarke Funkhouser
 Executive Director
 +1 650 401 2124
clarke.funkhouser@cushwake.com
 LIC #01252763

Robert Russell
 Woodstock Development
 +1 650 579 1901
russell@woodstockdevelopment.com
 LIC #01895777



cushmanwakefield.com